

# Using the Revolve Command

## Introduction:

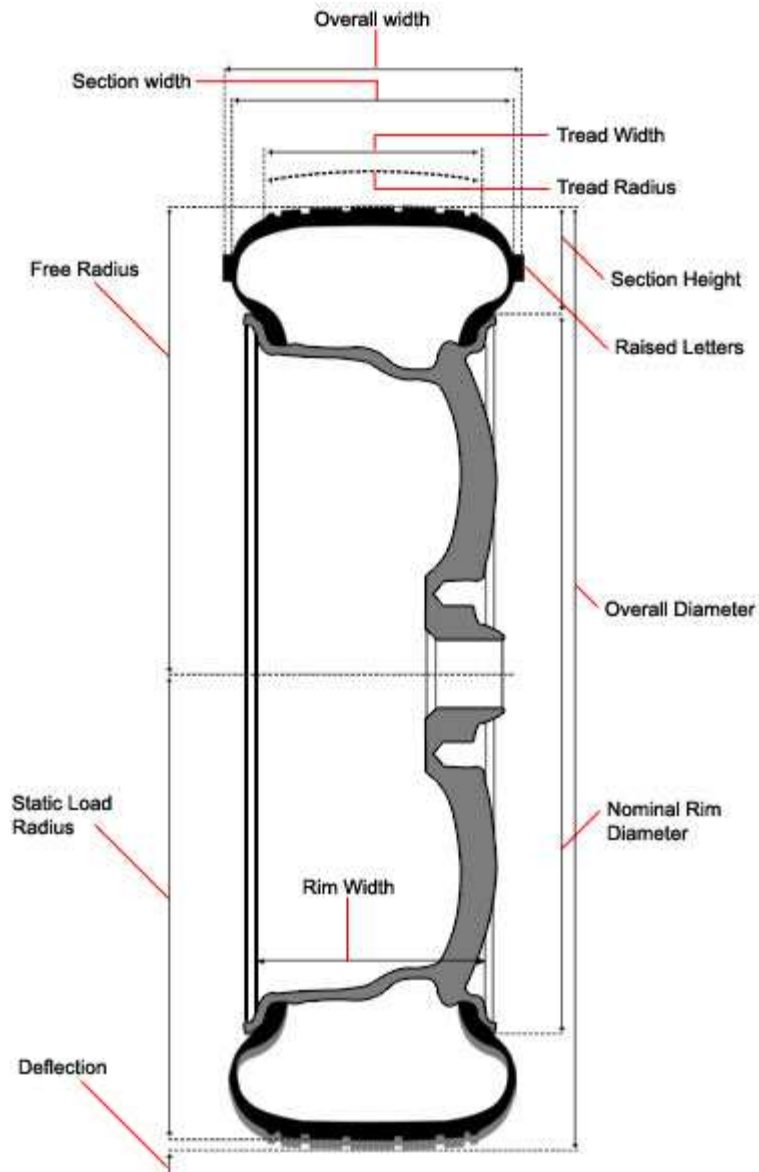
During your modeling process you will come across the revolve modeling command.

## The Objectives:

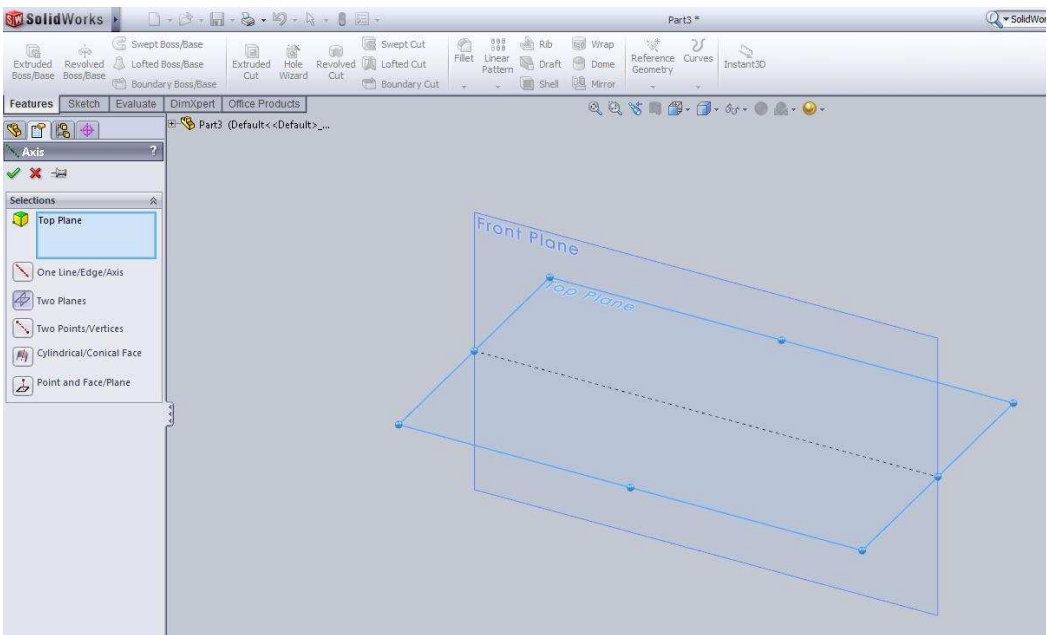
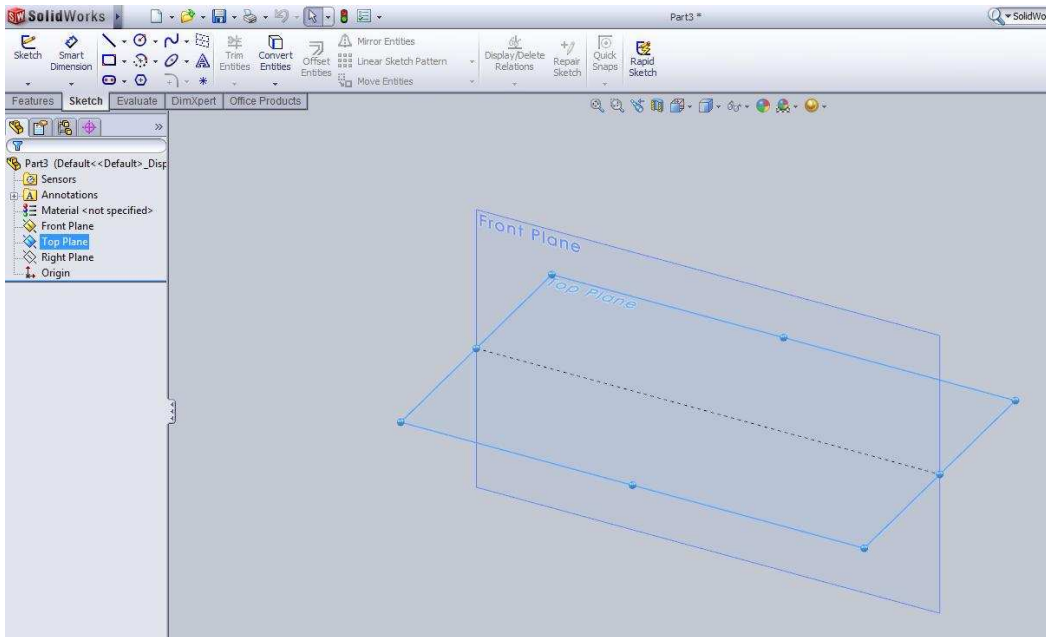
- 1-How to use the revolve command.
- 2-Making a 2d drawing.
- 3-Using the mating command for a simple two part assembly.
- 4-Assigning a material for each modeled part.
- 5-Taking a systematic approach of modeling two parts from one blue print.

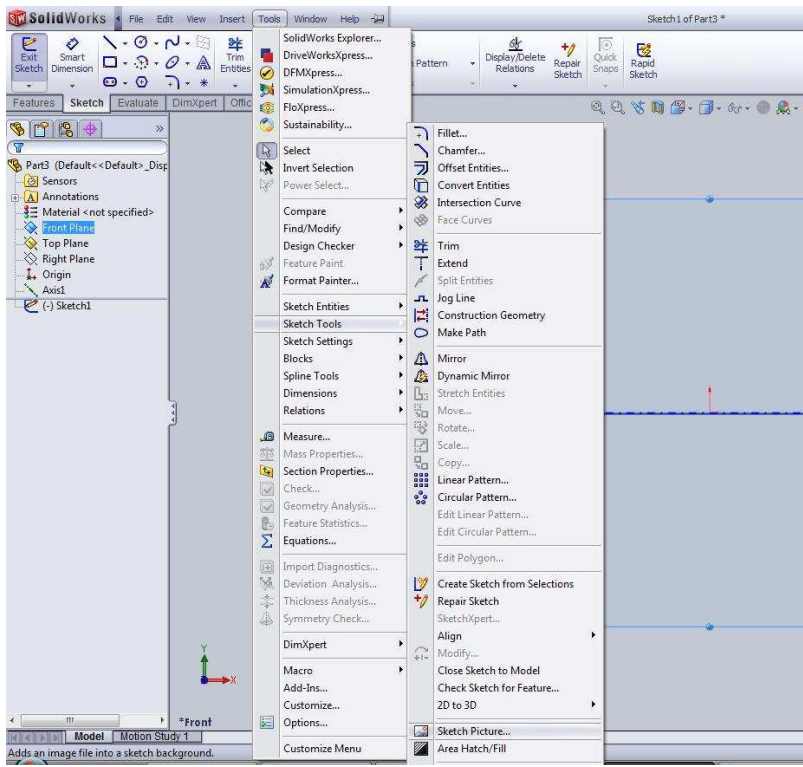
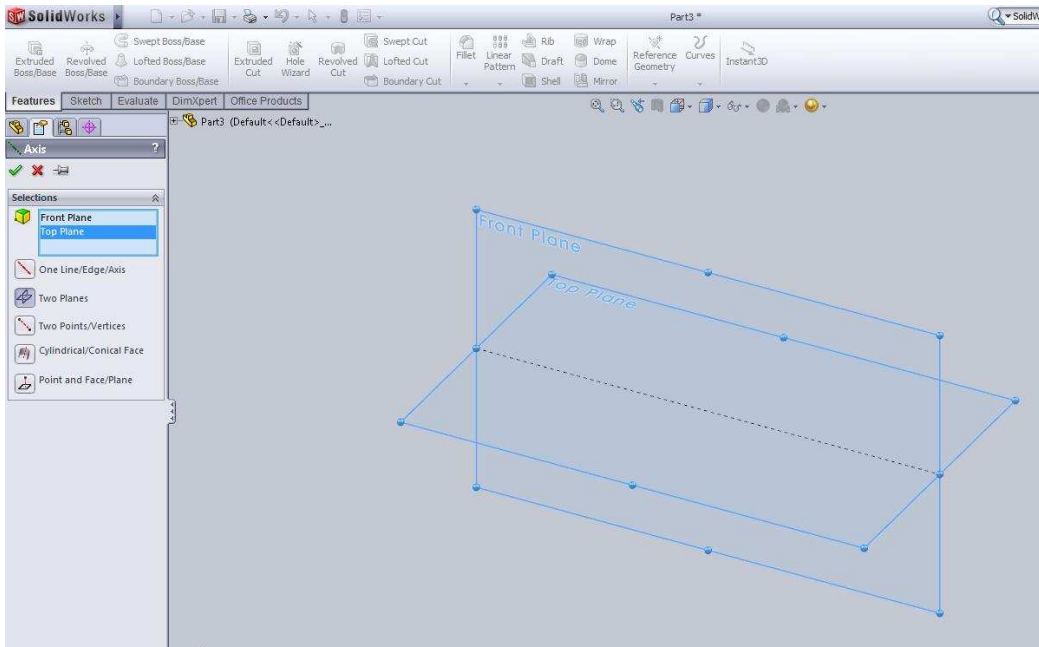
Step 1:

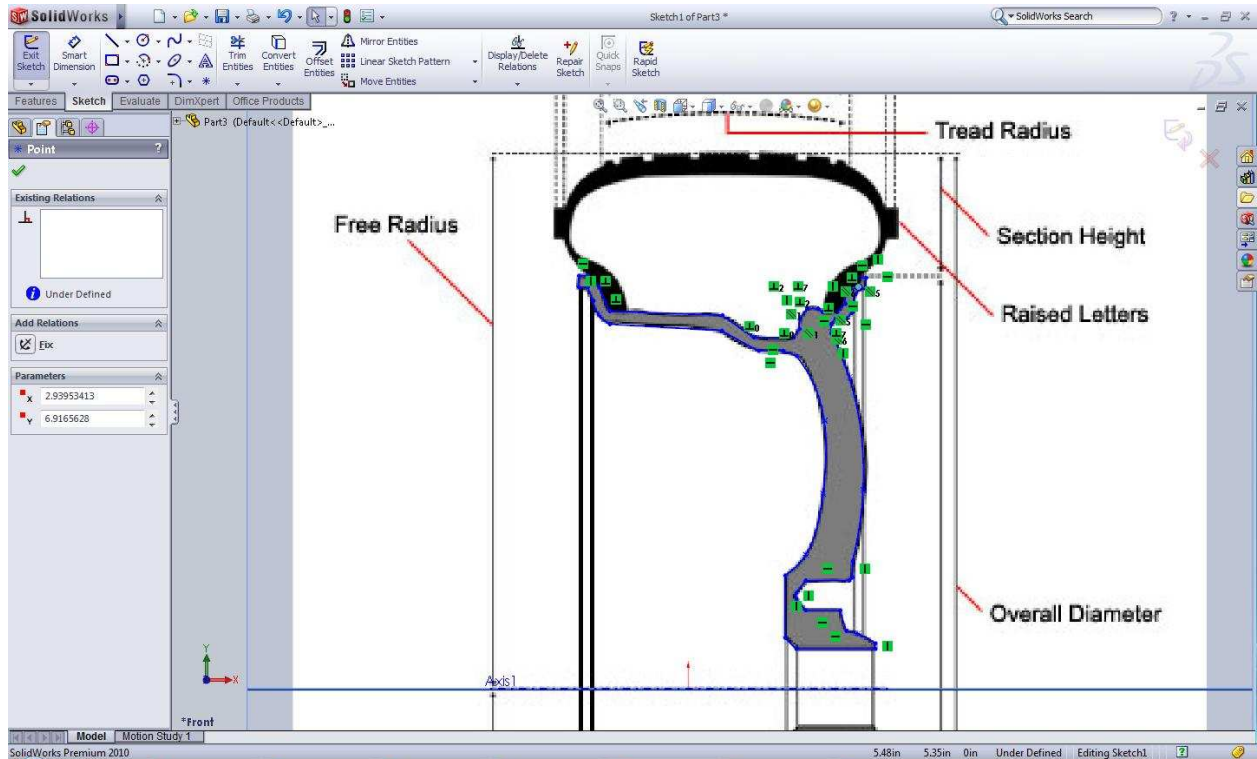
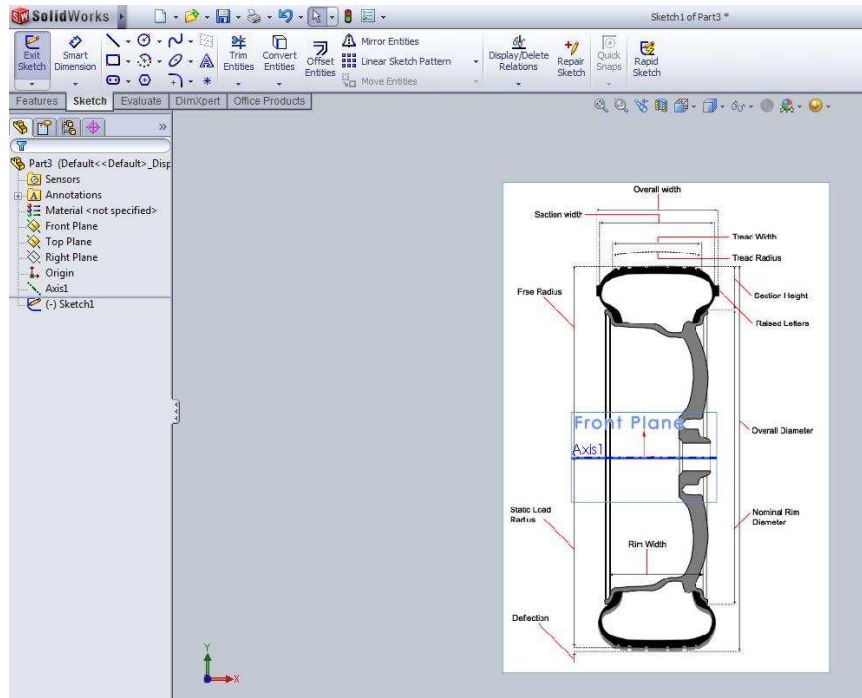
[http://www.wheelsnext.com/content/tire\\_measurements.html](http://www.wheelsnext.com/content/tire_measurements.html)

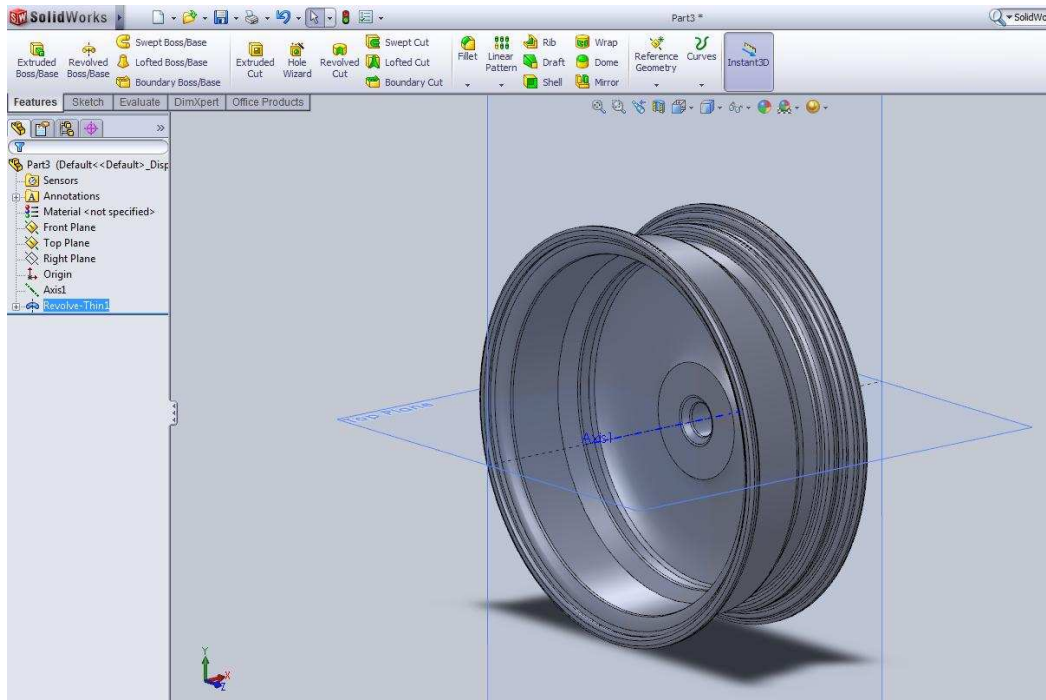
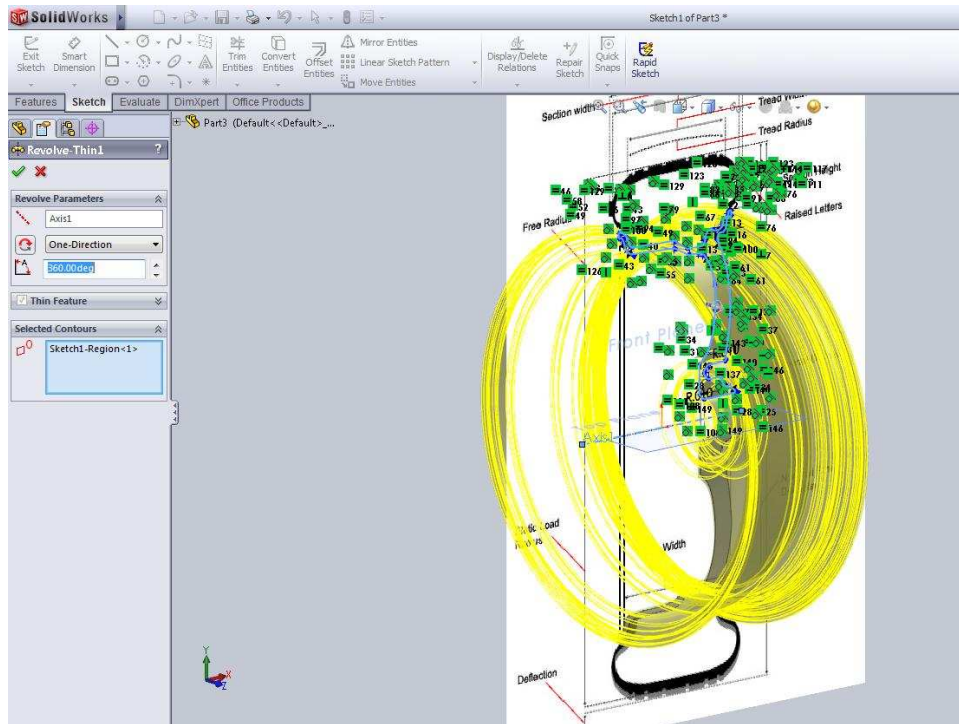


Step 2:

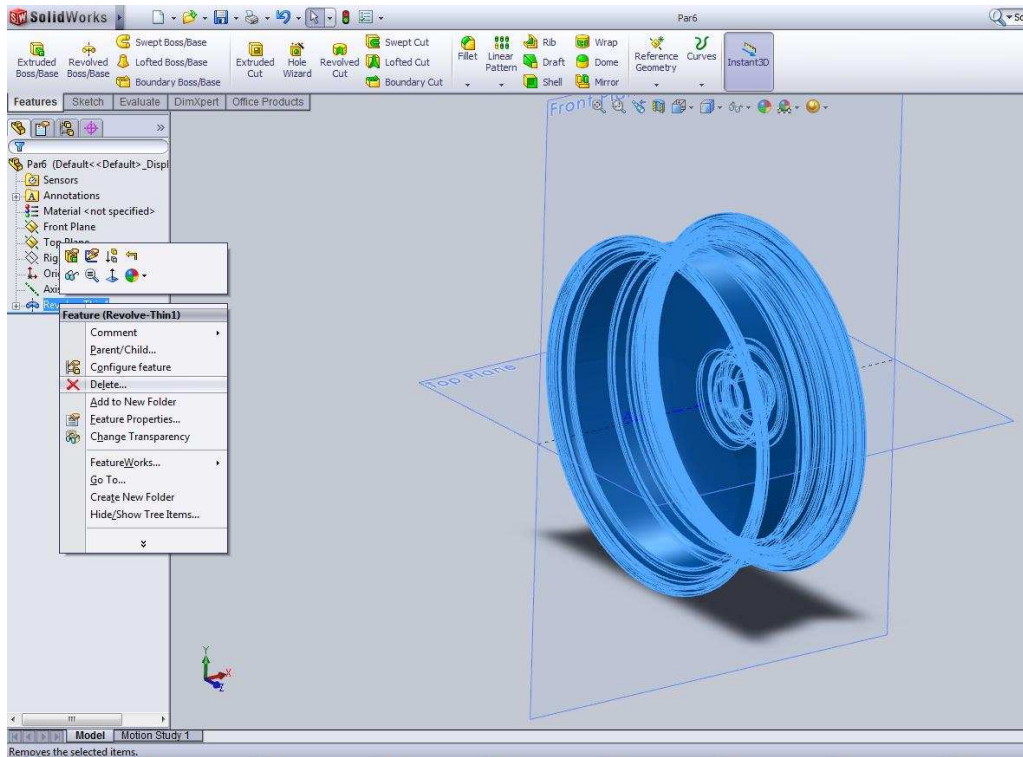




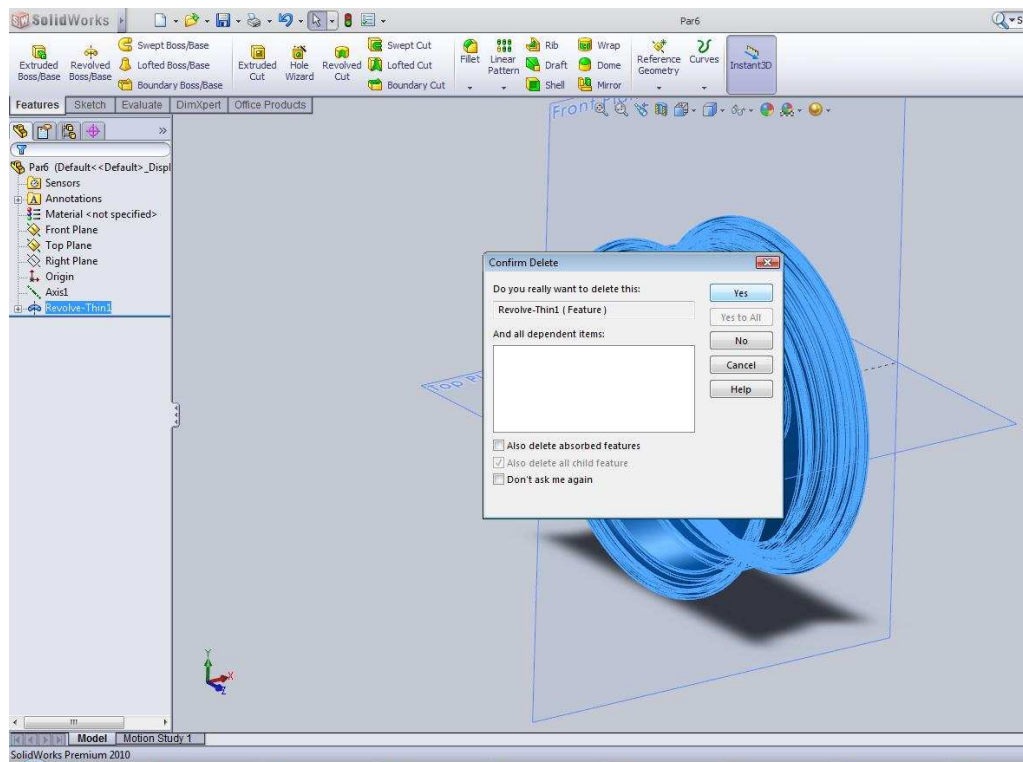








Removes the selected items.



SolidWorks Premium 2010

